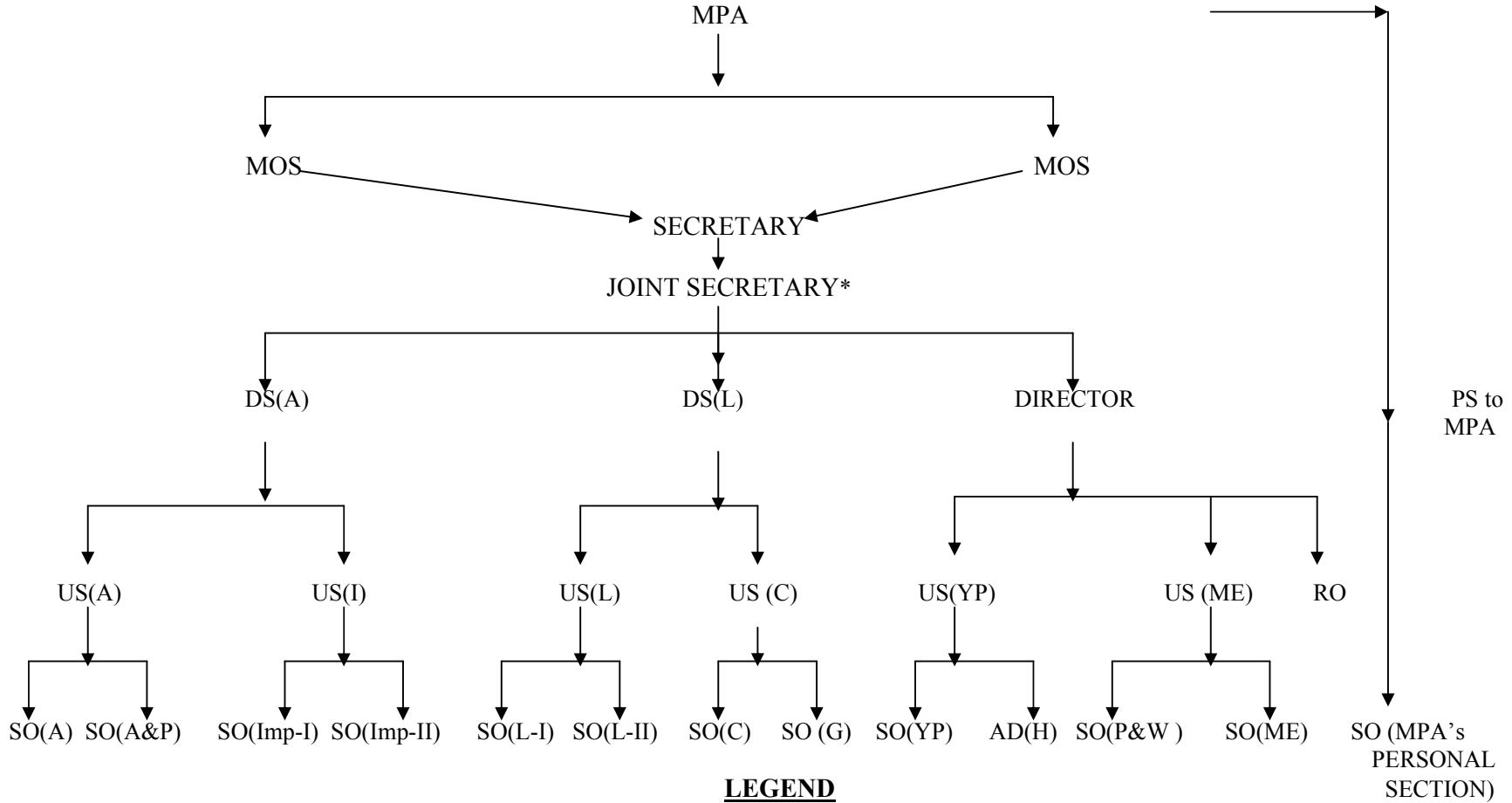


**ORGANISATIONAL CHART OF MINISTRY OF PARLIAMENTARY AFFAIRS  
(AS ON 19.11.2009)**



**LEGEND**

MPA- Minister of Parliamentary Affairs  
MOS- Minister of State  
DS- Deputy Secretary  
US- Under Secretary  
SO- Section Officer  
AD- Assistant Director  
RO- Research Officer

\*Vacant

A-Administration  
L-Legislative  
YP- Youth Parliament  
Imp.-Implementation  
H- Hindi

G-General  
C-Committee  
ME-Members' Emoluments  
A&P- Accounts & Purchase  
P&W- Protocol & Welfare